

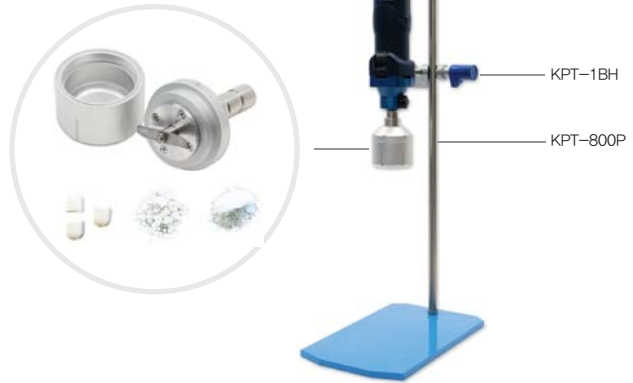
Lab Grinder (DRY/WET)

파쇄 · 분산

KTM30 basic, Lab Grinder (DRY/WET)



▶ KTM30 basic



특징

- Soft & Hard 한 부서지기 쉬운 물질을 적은 손실의 건식 분쇄에 적합
- 10,000 ~ 30,000 rpm 범위의 속도 조절
- 분리 및 세척, 밀폐가 쉬운 고급 Steel Chamber 사용
(Sample 경도에 따라 Stainless 또는 Aluminum 으로 재질 선택 가능)
- 분쇄하고자 하는 Sample 종류에 따라 3종류의 Cutter 교체 사용 가능
- Cooling/Heating Chamber base 사용시 Grinding chamber 외부로 냉/온수를 순환시켜 Sample 온도 조정
- Motor drive (KT30)는 KT30 Homogenizer dispersing elements 와 공용으로 사용 가능
- 하나의 Motor drive 로 건식 분쇄기와 습식 분쇄기로 사용 가능
- 기기의 과부하 보호 기능

Specification

Model		KTM30 basic
Ident. No.		K133100
Motor capacity		500 W
Speed range		10,000 ~ 30,000 rpm
Speed adjustment		Cont. variable
Useful volume		50 ml or 100 ml
Overload protection		yes
Duty cycle ON/OFF		1 min / 10 min
Circumferential speed		56 m/s
Chamber Material		Aluminum, Mohs 6 Stainless, Mohs 9
Max. granularity of task		10 mm
Weight	KTM30 basic	3 kg
	Base	2.7 kg
	Cooling/Heating chamber base	2.3 kg
Dimension	KTM30 basic	70 x 70 x 327 mm
	Base	150 x 150 x 337 mm
	Cooling/Heating chamber base	130 x 130 x 332 mm

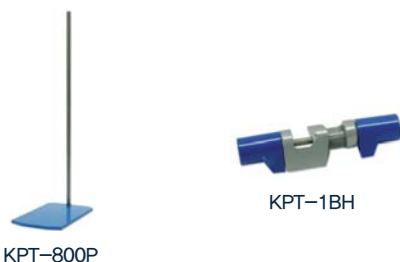
Accessories

▶ Cutter

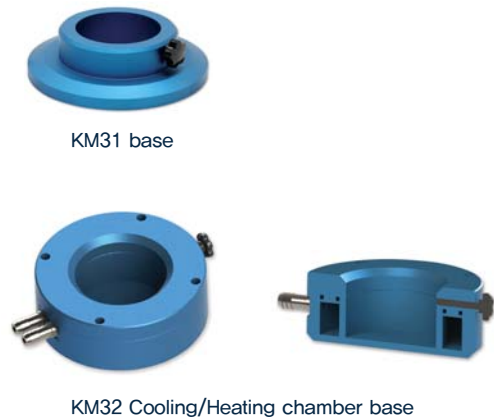


- KM3S Soft cutter, For Mohs hardness up to 6
- KM3H Hard cutter, For Mohs Hardness up to 9
- KM3B Cutting blade, For pulverizing soft, fibrous grinding materials

▶ Stand & Boss head



▶ Base



Lab Basket Mills (WET)

파쇄 · 분산

MSG-LB5 Lab Basket Mill (WET)



▶ MSG-LB5

Features

Applicable for dispersing and grinding small batch materials, results in excellent grinding fineness with uniform particle size distribution. The unique basket structure of this sand mill bring a efficient circulating system to the materials. With the high speed drive of drive plate, the high hardness milling medium has very excellent milling effect. It has good milling fineness, high efficiency and the milled materials have uniform diameter. The whole milling process is carried out in closed state. It has no dead space, the discharge is complete and the residue is very few. It is easy to clean or to change the color or other products.

Specification

Model	MSG-LB5
Capacity range	1-5 L (Water as medium)
Power Supply	220V, 50/60 Hz
Power	750 W
Rotation Speed	0-2880 rpm, Frequency Converter Control
Container	With standard 2.5L jacketed tank (SUS304) for cooling or heating
Grinding medium	Pure Zirconium Beads
Height Adjustment	Manual Lifting, Electric Lifting
Stand/Base Seat	Stainless Steel

Planetary ball Mills

유성형 볼밀



KV-series, Vertical type / KH-series, Horizontal type



KV-series
Vertical Planetary Ball Mill



KH-series
Horizontal Planetary Ball Mill

Features

Planetary Ball Mill has four ball grinding tanks installed on one turntable. When the turntable rotates, the tank axis makes planetary movements, the balls and samples inside the tanks are impacted strongly in high speed movement, and samples are eventually ground into powder. Various kinds of different materials can be ground by the mill with dry or wet method. Minimum granularity of ground powder can be as small as 0.1µm.

Applications

Planetary ball mill is the requisite equipment for mixing, fine grinding, small sample preparing, new product development and small volume high-tech material production. The product has small volume, complete function, high efficiency and low noise. It is the ideal facility to acquire research samples for research institutes, universities as well as enterprise laboratories (can acquire four samples in one experiment). If mated with vacuum ball milling tanks, it can grind samples in vacuum status. The product is extensively applied to in the fields of Geology, Mining, Metallurgy, Electronics, Construction Material, Ceramics, Chemical Engineering, Light Industry Medicine, Environmental Protection etc.

A wide range of powder can be grinded by our planetary ball mill with different mill jars and balls, such as ore powder, fluorescent powder, glass powder, pigment powder and so on.

Planetary ball mill technical features

Model	KV/KH-series
Drive Mode	Gear drive and belt drive
Operation Mode	Two or four grinding tanks working together
Maximum Loading Capacity	2/3 of the capacity of milling tank
Feeding Size	Soil materia ≤ 10mm, other materials ≤ 3mm
Output Granularity	Minimum 0.1 µm
Rotational Speed Ratio	1:2(0.4L, 2L, 4L) ; 1:1.5(12L, 20L)
Max. Continuous Operating Time	72 hours

▶ Optional accessories (page 4)

Vertical Planetary Ball Mill Parameter

Model	Total jar volume	Max. Rotating speed	Power	Dimension
KV-0.4	0.4 L	870 rpm	0.25 KW	530x300x320 mm
KV-1	1 L	670 rpm	0.75 KW	530x300x320 mm
KV-2	2 L	670 rpm	0.75 KW	730x430x580 mm
KV-4	4 L	670 rpm	0.75 KW	800x470x560 mm
KV-6	6 L	670 rpm	0.75 KW	800x470x560 mm
KV-8	8 L	580 rpm	1.5 KW	880x600x640 mm
KV-10	10 L	580 rpm	1.5 KW	880x600x640 mm

Horizontal Planetary Ball Mill Parameter

Model	Total jar volume	Max. Rotating speed	Power	Dimension
KH-0.4	0.4 L	870 rpm	0.75 KW	560x470x730 mm
KH-1	1 L	670 rpm	0.75 KW	560x470x730 mm
KH-2	2 L	670 rpm	0.75 KW	560x470x730 mm
KH-4	4 L	670 rpm	0.75 KW	560x470x730 mm
KH-6	6 L	670 rpm	0.75 KW	1050x730x810 mm
KH-8	8 L	580 rpm	1.5 KW	1050x730x810 mm
KH-10	10 L	580 rpm	1.5 KW	1050x730x810 mm

Planetary ball Mills

유성형 볼밀



Accessories

Mill Pots

We provide all kinds of mill pots in any matched size, which are made from following materials of agate, Alumina corundum ceramics, zirconia ceramics, silicon nitride ceramics, carborundum ceramics, stainless steel, high wear resistant steel, manganese steel, nylon, polytef, PU, cemented carbide, crystal glass, and etc.



Zirconia pot



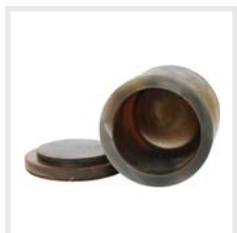
Nylon pot



Stainless steel pot



PTFE pot



Agate pot



PU pot



Tungsten Carbide pot

Mill Balls

We provide all kinds of mill pots in any matched size, which are made from following materials of agate, Alumina corundum ceramics, zirconia ceramics, silicon nitride ceramics, carborundum ceramics, stainless steel, high wear resistant steel, manganese steel, nylon, polytef, PU, cemented carbide, crystal glass, and etc.



Zirconia ball



Stainless steel ball



Tungsten Carbide ball



PU ball



Alumina ceramic ball



Agate ball



Hard metal ball

Lab Grinders

분쇄기



MD-series, Universal High-speed Grinding Machines



▶ MDT



▶ MDY

Features

Universal high-speed grinding machine adopts ultra-high speed single-phase motor as the drive, can quickly grinding all kinds of soft and hard materials; Only 1 minute can grinding the need grind medicine into 30~200 mesh powder, both uniform and non-loss. Wide range of grinding: Coffee beans, Chinese and western medicine, pearl, chemical raw material, food raw materials, mineral, soil, grain, coal and experimental material etc, different kind of materials can be grinding very good, materials non-loss, grinding different materials without cross color and tainted by other oder.

- High speed - Only 0.5~3 minutes grinding dry materials into fine powder.
- Full seal - Silica gel sealing ring, fine powder not leak completely.
- Stainless steel grinding tank - Both wear-resistant and health and safety.

Specifications

Model	Vot (v)	Rotation Speed (r/min)	Capacity (g)	Fineness (mesh)	Size of the Powder Bowls	Weight (kg)	Dimension (LxWxH, mm)
MDT-200	220	25000	200	30-200	135x100	4.0	160x160x300
MDY-200	220	25000	200	30-200	135x100	5.5	200x220x280
MDY-400	220	25000	400	30-200	177x118	8	220x220x370
MDY-600	220	25000	600	30-200	189x133	8.5	220x220x390
MDY-800	220	25000	800	30-200	211x143	11	230x230x440
MDT-1000	220	25000	1000	30-200	211x153	11.5	230x230x460

DT-series, Continuous Grinding Machines



Features

The grinder is featured as continuous feeding, hammer grind. The hammer is made of hard alloy steel, and durable service. The grinder is equipped with colander and can grind the materials into different fineness through different shapes of colander according to the requirements the fine powder can be out through the cloth bag, the special structure rotates without vibration, low noise low loss and high efficiency. Wide range of grinding: Chinese and western medicine, food material, experimental material etc.

Specifications

Model	Output (g/h)	Fineness (mesh)	Power (W)	Rotation Speed (r/min)	Weight (kg)	Dimension (LxWxH, mm)
DT-15	1000-15000	30-180	1200	20000	10.5	300x170x400
DT-20	5000-2000	30-180	1500	2840	25	500x170x550
DT-25	8000-25000	30-180	1700	2840	28	330x330x800
DT-35	10000-35000	30-180	2000	2840	40	420x420x1000

Lab Grinders

분쇄기



KTG-48, High-Throughput Tissue Grinder



▶ KTG-48



▶ Adapter

Features

KTG-48 laboratory ball mill which a free choice in dry grinding, wet grinding, mixing and homogenizing treatment. Sample categories provided: plant tissues, animal tissues, cells, bacteria and yeast, etc. For large-throughput sample extraction of nucleic acid, the grinder can greatly enhance the efficiency and quality of grinding.

Specification

Model	KTG-48
Grinding Frequency	300-2100 times/min
Timing	1-9999 second
Frequency	10-70Hz
Rated	180W
Supply	220V/60Hz
Sample capacity	2ml for 24 holes or 48 holes
Dimensions	L369xW360xH520mm

KTG-192, High-Throughput Tissue Grinder



▶ KTG-48



▶ Adapter

Features

KTG-192 laboratory ball mill can meanwhile grind 2X96 pairs of samples in 3 minutes. A free choice in dry grinding, wet grinding, mixing and homogenizing treatment. Sample categories provided: plant tissues, animal tissues, cells, bacteria and yeast, etc. For large-throughput sample extraction of nucleic acid, the grinder can greatly enhance the efficiency and quality of grinding.

Specification

Model	KTG-192
Grinding Frequency	3-30 times/sec
Timing	1-99 minutes
Rated	375 W
Supply	220V/60Hz
Sample capacity	2ml adapter 2 × 64 holes; 0.2ml-0.5ml adapter 2 × 96 holes; 5ml of the adapter 2 × 24 holes; adapter clip to clip 96 enzyme plate 4 × 96 holes
Dimensions	L514xW380xH520 mm
Weight	61 Kg